

Infrastructure for urbanization: a perspective from South Africa

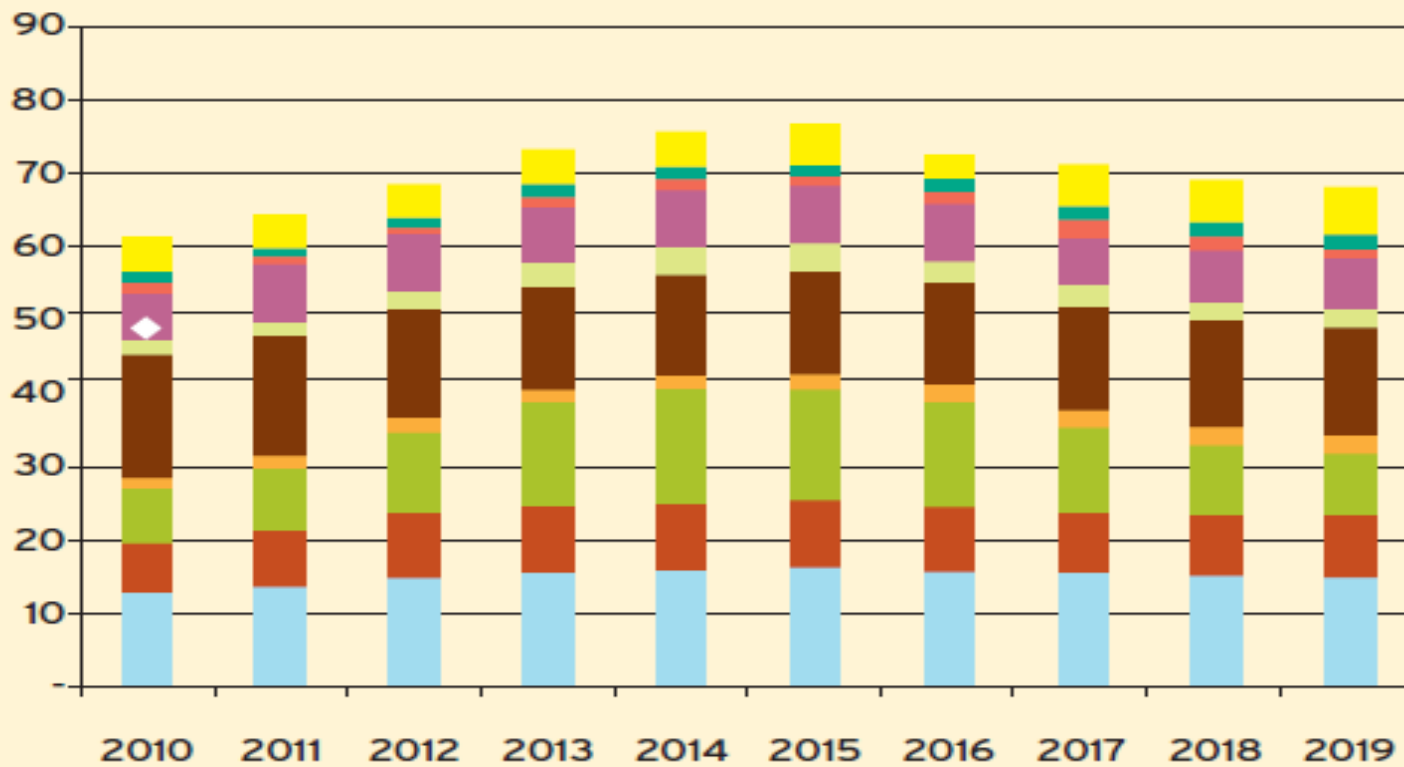
Bricks and dollars: improving public investment in infrastructure

Centre for Aid and Public Expenditure
London, 11-12 November 2015

Marissa Moore
National Treasury, South Africa

Service	Source and notes	Backlog (% with services below adequate)
Housing	The Department of Human Settlements currently defines the backlog with respect to housing as an informal dwelling and 30% of traditional dwellings. It has a range of figures for the actual number with MIIF using a figure of 2,140,000 households ⁴ .	17% of households.
Water supply	The Department of Water Affairs based on its database.	9% of households.
Sanitation	The Department of Water Affairs based on its database.	24% of households.
Electricity	The Department of Energy, based on its database.	27% of households.
Solid waste	2007 Community Survey includes access to solid waste services. The figure for the backlog is based on the assumption that a properly managed 'on site; disposal and communal landfills in rural areas are 'adequate'.	7% of households.
Roads	The Department of Transport's survey of 2007 indicates surface type and condition.	14% of rural access roads are earth surfaced. 75% of access roads in rural and urban areas are in poor condition.
Public services	No good data available so rough estimate presented here	12% inadequate in urban areas; 65% inadequate in rural areas.

R billions



Water supply

Sanitation

Electricity

Solid waste

Roads

Public services

Budget

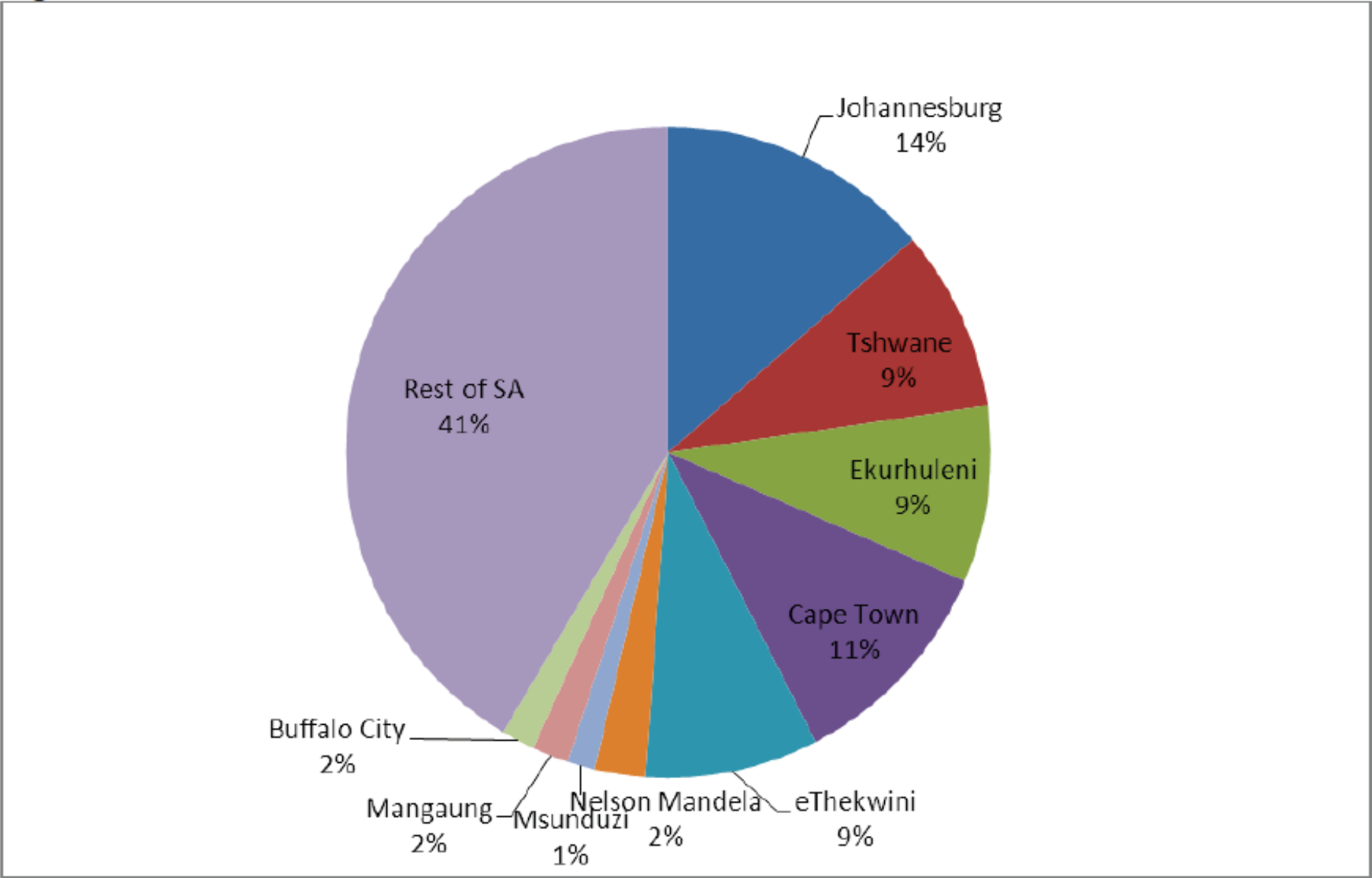
Public transport

Public places

Economic infrastructure and buildings

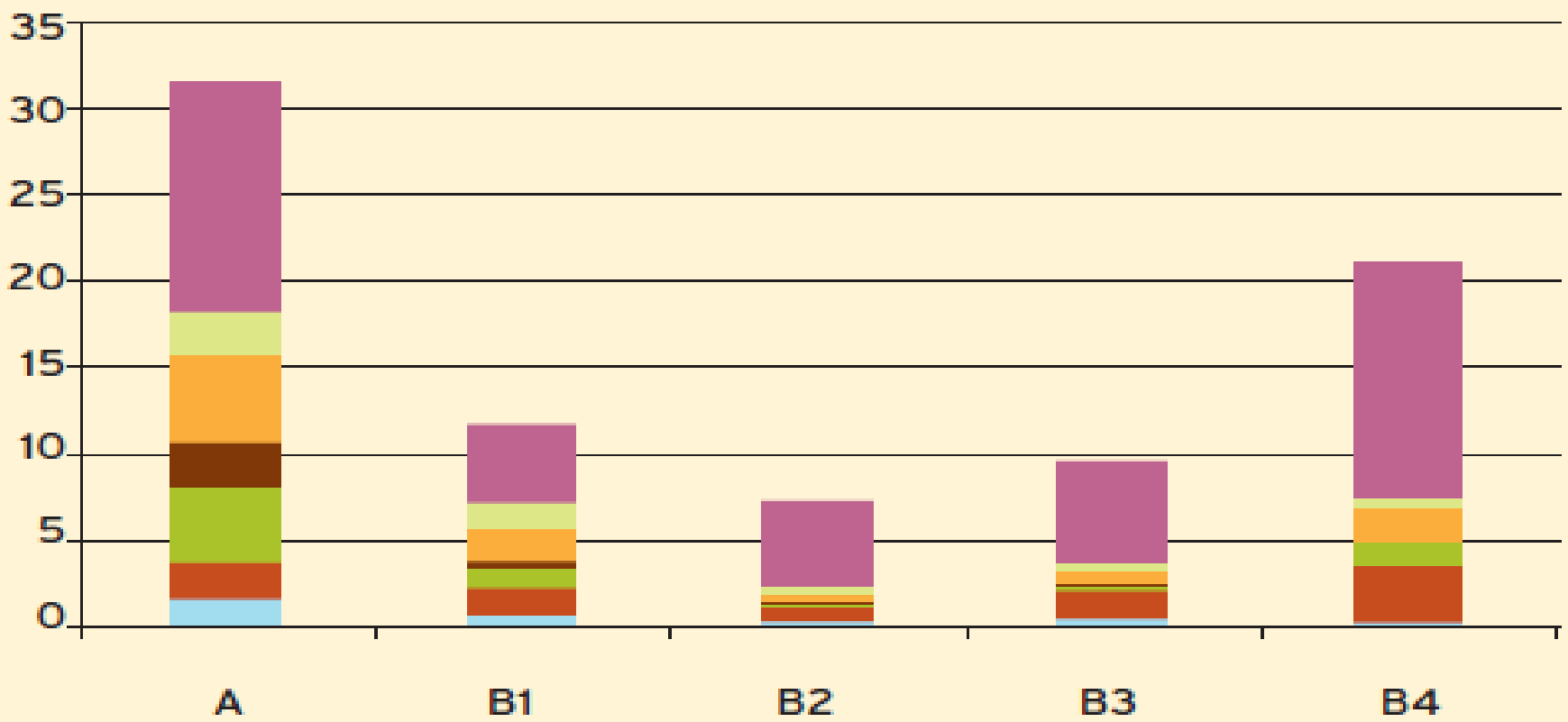
Administration buildings and systems

Figure 6: Share of total GVA in South Africa, 2009



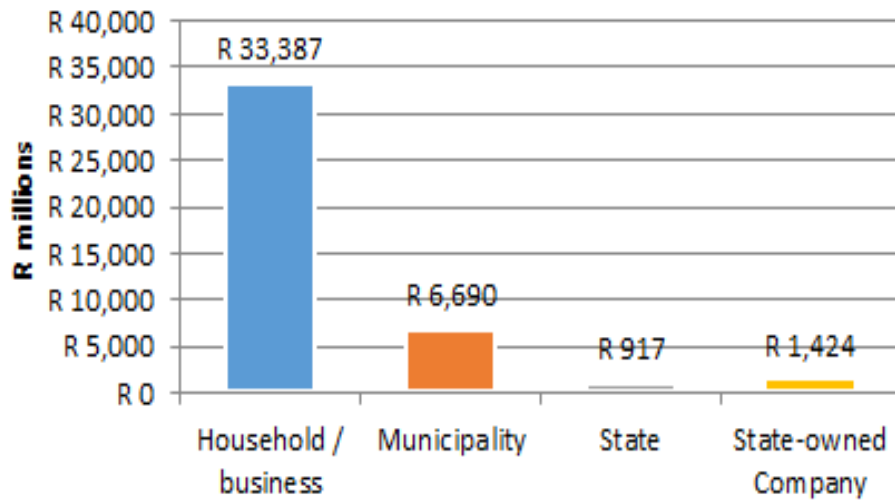
Source: Quantec Regional Database, 2011

R billions

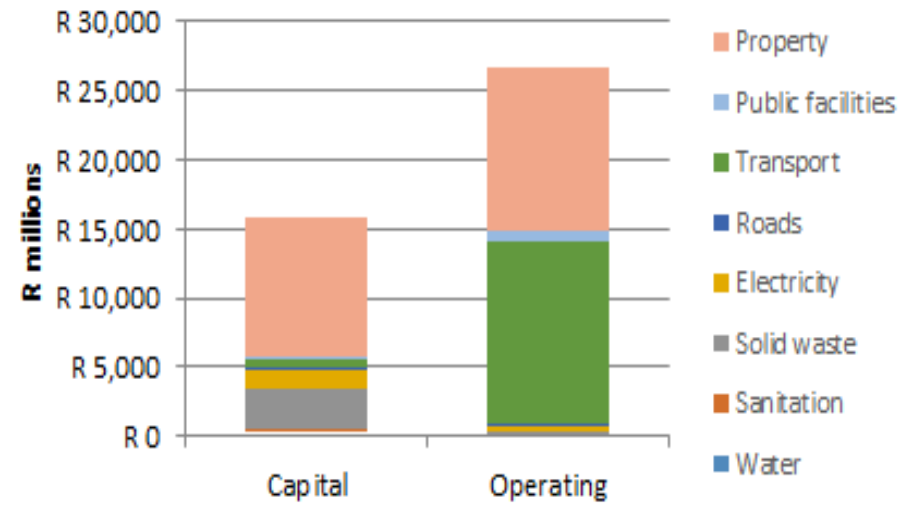


- Housing subsidies (infrastructure only)
- MIG
- Other grants and subsidies
- Development contributions
- Service provider funding
- Internal funds
- Borrowing

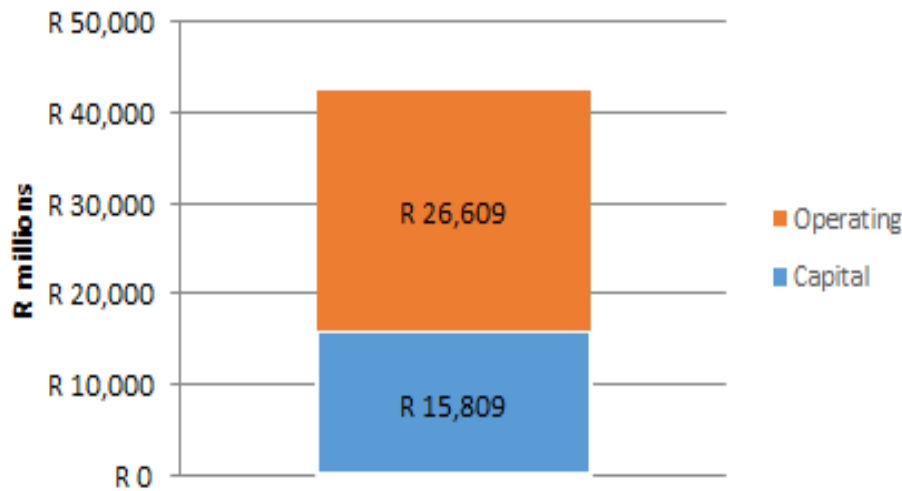
NPV of Costs by Actor



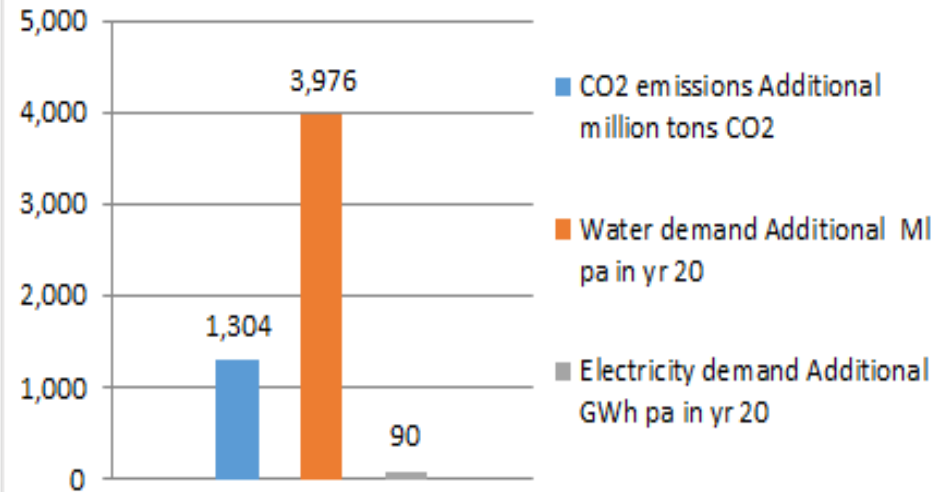
NPV of total cost by type and sector



NPV of total cost by type



Environmental impact



Thank you, dankie, ke a leboha

- marissa.moore@treasury.gov.za