

Cash for Work in Emergencies

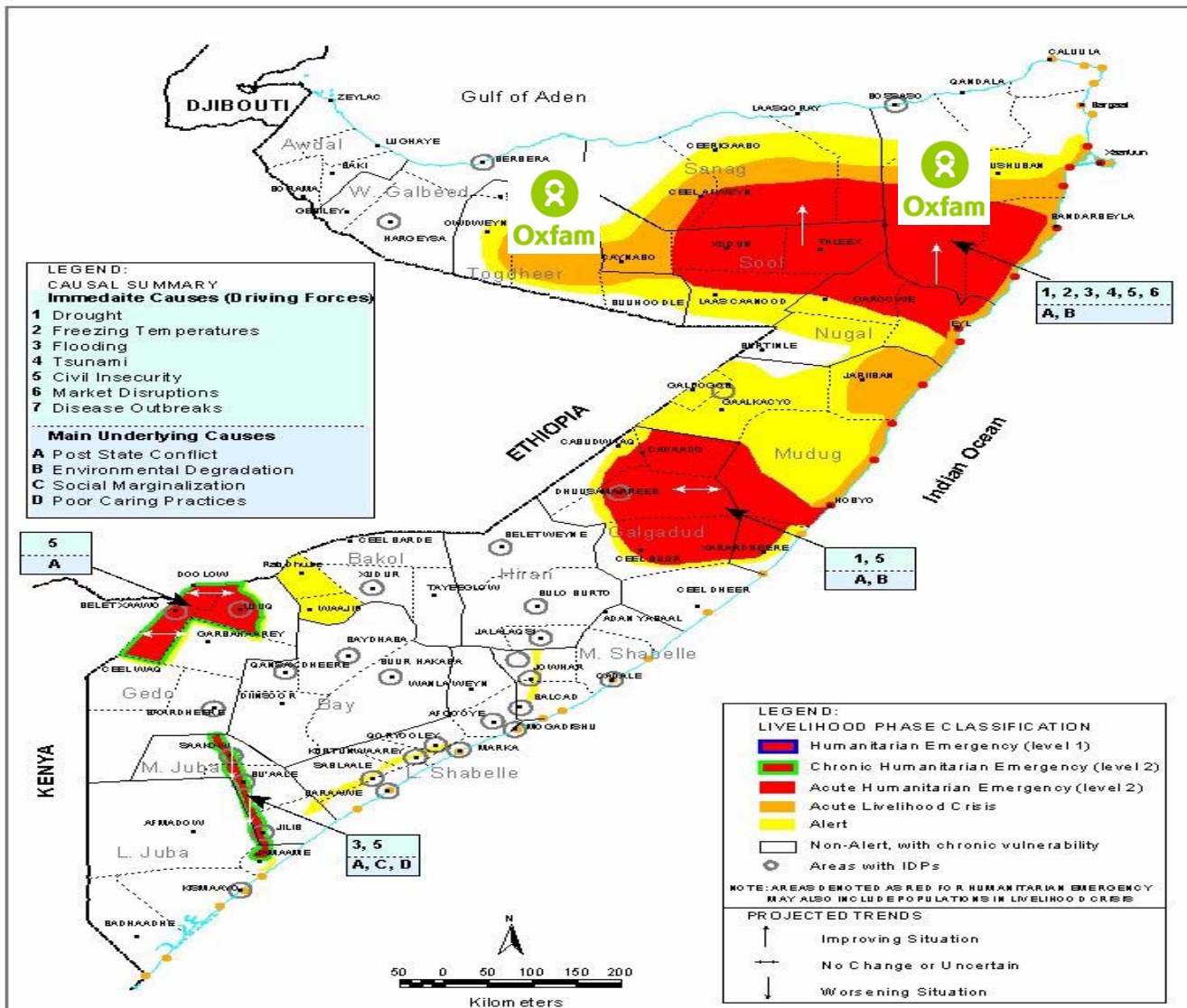


Experiences from Somaliland/ Puntland Programme, 2005

Reporting: Yves Reynaud, Programme Coordinator
Nairobi May 11th 2005

SOMALIA: INTEGRATED FOOD AND LIVELIHOODS SECURITY PROJECTIONS:

Post D eyr (January 2005) Until Gu (June 2005)



Location of CFW projects

J. Produced: January, 2005

Food Security Analysis Unit - Somalia

P.O. Box 1230 Village Market, Nairobi, Kenya. Email: fsauinfo@fsau.or.ke tel: 254-20-3745734 fax: 254-20-3740598
 FSU is managed by FAO, funded by EC and USAID-Somalia. FSU's Partners are FEWS, WFP, FAO, UNDOHA-SCF-UK, UNICEF, CARE, UNDP
 The boundaries and names on these maps do not imply official endorsement or acceptance by the United Nations. The regional & District boundaries reflect those endorsed by the Government of the Republic of Somalia in 1986.



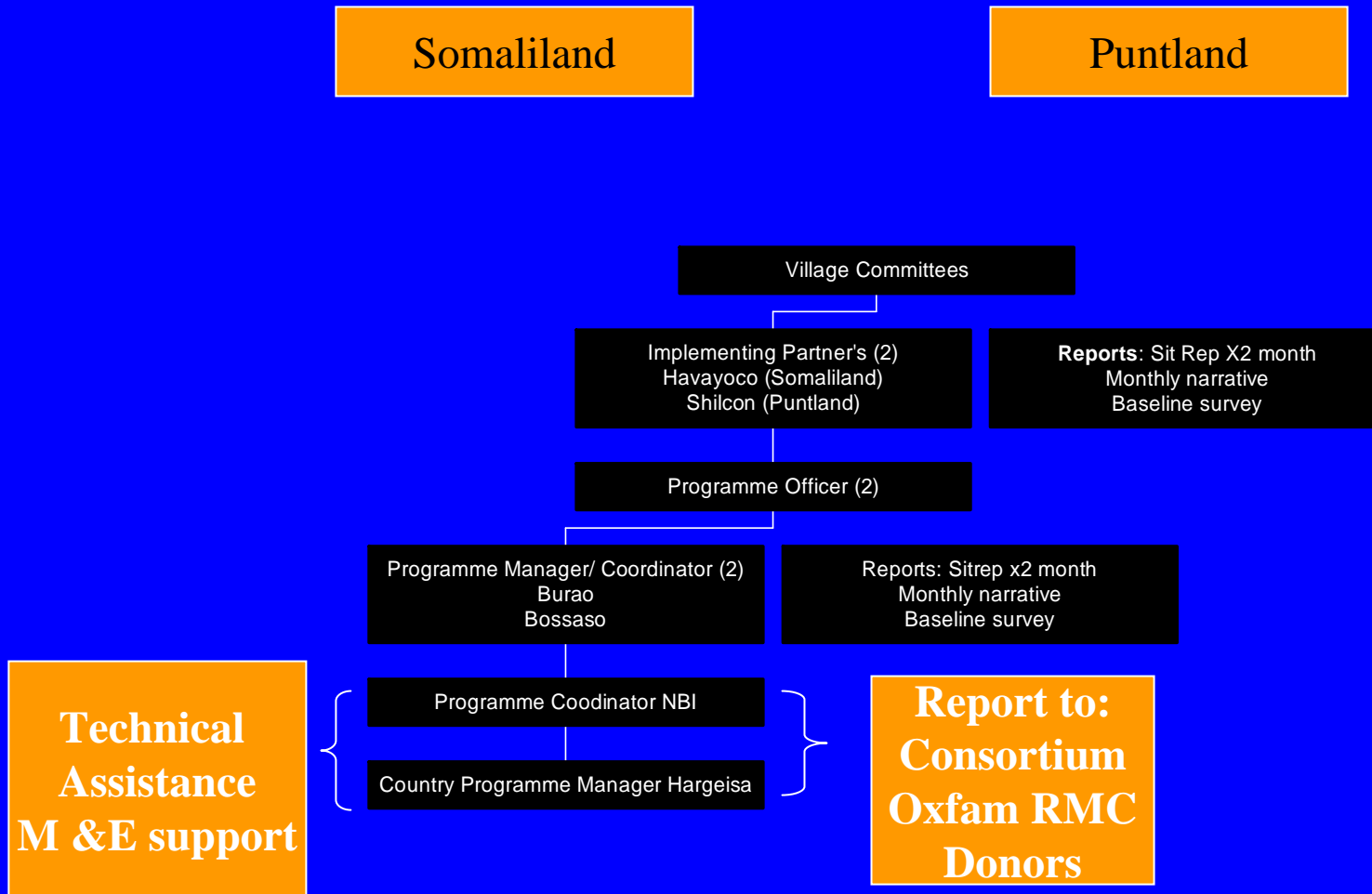
Summary of Project

- Part of Consortium with Oxfam GB, Norwegian People's Aid and Horn Relief
- Duration: January to June 2005
- Location: Puntland & Somaliland
- Means of operation: Through local partners (Havayoco & Shilcon) & money transfer companies
- Nos of direct bnfs: 2,700 CFW
900 Cash Relief

Programme Organisation

Somaliland

Puntland



Cash Relief Bnf
BARI



Cash for Work Micro projects



**CFW
Micro project**



Programme Impact - 4 Levels

TARGETING & DISTRIBUTION

CFW:

- Destitute pastoralists
- 60 shoats or less
- No capital/ remittances
- No physical assets

Receive: USD 88/month for 4 months

Cash Relief:

- Women, Elderly, handicapped, Orphans, Minority groups, + CFW criteria

Receive: USD 50/month for 4 months

IMPACT ON HOUSEHOLDS

- Debt relief
- Food and non food items
- Transport
- Education
- Medical expenses
- Savings (10- 15%)

- Debt Relief
- Food Items
- Transport
- Medical Expenses

Programme Impact - 4 Levels contd

IMPACT ON ECONOMY

- Credit system
- Local supply
- Adjustment to demand
- No price fluctuation
- Influx of new traders
- Influx of people

MICRO PROJECTS

- Water conservation
- Erosion control
- Pasture development
- Land reclamation
- Collective Action
- Small scale
- Short term

LIMITATIONS!

OPPORTUNITY COST

- Top down approach
- Labour mobilisation
- Opportunity cost

EXIT STRATEGY

- Impact ends with distribution
- Back to the starting point
- Demobilisation

OPPORTUNITIES

- Planning by VRC's
- Investment funds (collective action)
- Credit/ micro-credit (individuals)

Implementing Partner
Local/ Regional Opportunities

- Permanent needs assessment
- Planning by VRC and IP
- Early warning system recovery

Implementing Partner
Assessment & Planning

What Next?

CURRENTLY

- No needs assessment
- No planning exercise
- Partnership with VRC's exist
- Partnership with IP ends



FUTURE

- Assessment/ Planning/ budgeting
- Partnership agreements
- Emergency/ Recovery/ Devept

